

GENERAL PLAN
 CONSISTING OF SHEETS 1 TO 3
 OF THE TOWNSHIP OF
SASOLBURG EXTENSION 61 (CLUB MILLS)

COMPENSATION OF EMPLOYEES 2017 - 2021
 AND STRAITS
 SITUATED ON PORTION 4 OF THE FARM REGISTRATION NO. 817
 DISTRICT NO. 777/5000 KOP of THUNDER BAY
 PROVINCE FREE STATE
 ADMINISTRATIVE DISTRICT : FORTH

LEGEND OF SYMBOLS
 A Proposed town boundary
 B Proposed street layout
 All other symbols Proposed town plan
 DISTRICT MAP
 (See page 1 in separate volume enclosed)

Survey in accordance with Section 100 of the Survey Act, 1981
 by
 [Signature]
 Civil Engineer
 Licensed Professional Land Surveyor

S.G. No. 778/1999
 SHEET No. 1
 APPROVED
 [Signature]
 CIVIL ENGINEER
 (P) 07/07/99

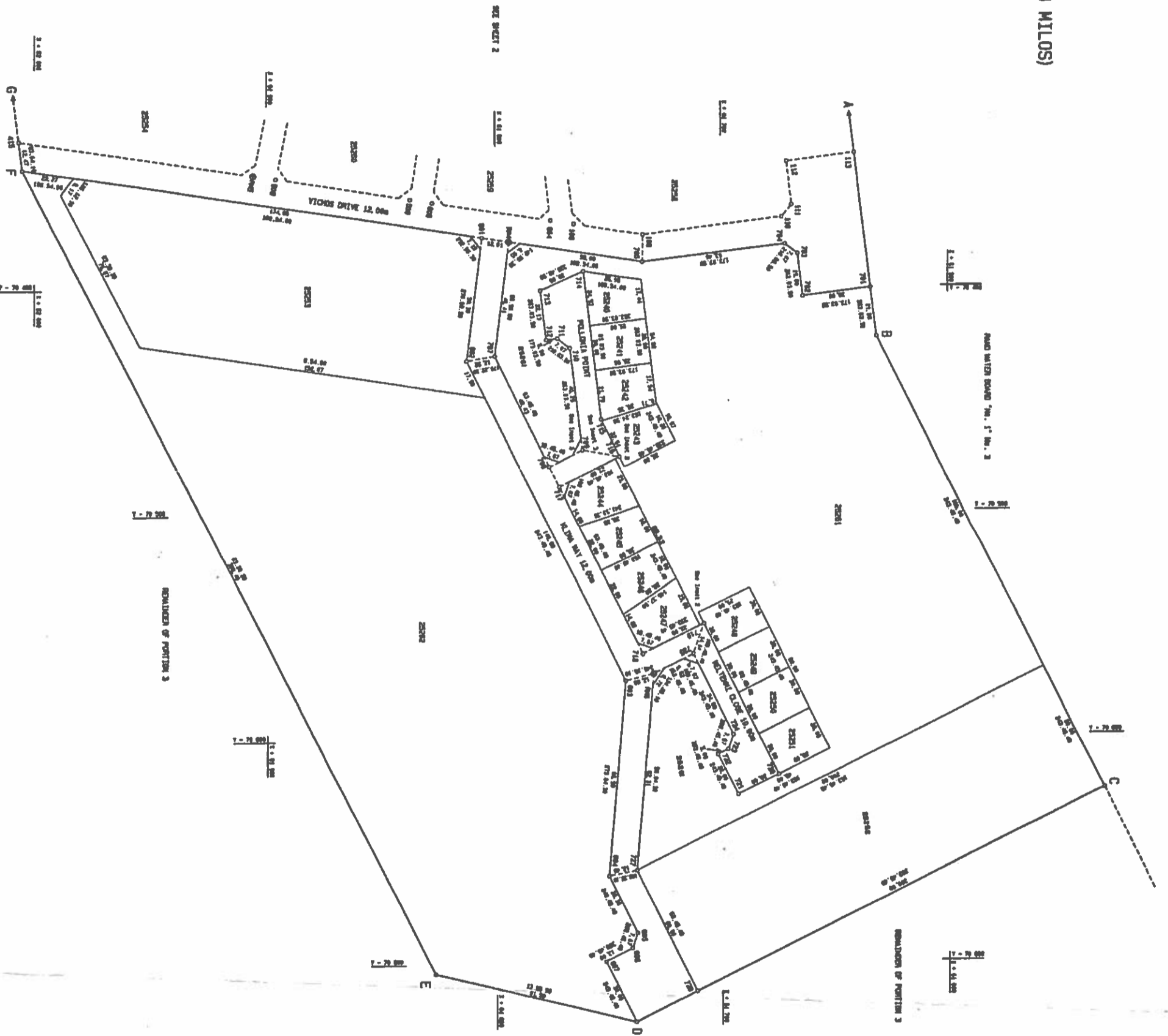
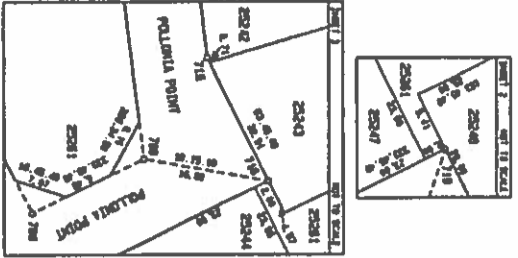
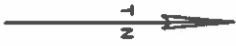
MAIN FIGURE

STATION	Bearing	Distance	STATION	Bearing	Distance
40	S 14° 01'	42.5	1	N 81° 59'	42.5
41	S 72° 00'	113.5	2	N 17° 00'	113.5
42	S 72° 00'	113.5	3	N 17° 00'	113.5
43	S 72° 00'	113.5	4	N 17° 00'	113.5
44	S 72° 00'	113.5	5	N 17° 00'	113.5
45	S 72° 00'	113.5	6	N 17° 00'	113.5
46	S 72° 00'	113.5	7	N 17° 00'	113.5
47	S 72° 00'	113.5	8	N 17° 00'	113.5
48	S 72° 00'	113.5	9	N 17° 00'	113.5
49	S 72° 00'	113.5	10	N 17° 00'	113.5
50	S 72° 00'	113.5	11	N 17° 00'	113.5
51	S 72° 00'	113.5	12	N 17° 00'	113.5
52	S 72° 00'	113.5	13	N 17° 00'	113.5
53	S 72° 00'	113.5	14	N 17° 00'	113.5
54	S 72° 00'	113.5	15	N 17° 00'	113.5
55	S 72° 00'	113.5	16	N 17° 00'	113.5
56	S 72° 00'	113.5	17	N 17° 00'	113.5
57	S 72° 00'	113.5	18	N 17° 00'	113.5
58	S 72° 00'	113.5	19	N 17° 00'	113.5
59	S 72° 00'	113.5	20	N 17° 00'	113.5
60	S 72° 00'	113.5	21	N 17° 00'	113.5
61	S 72° 00'	113.5	22	N 17° 00'	113.5
62	S 72° 00'	113.5	23	N 17° 00'	113.5
63	S 72° 00'	113.5	24	N 17° 00'	113.5
64	S 72° 00'	113.5	25	N 17° 00'	113.5
65	S 72° 00'	113.5	26	N 17° 00'	113.5
66	S 72° 00'	113.5	27	N 17° 00'	113.5
67	S 72° 00'	113.5	28	N 17° 00'	113.5
68	S 72° 00'	113.5	29	N 17° 00'	113.5
69	S 72° 00'	113.5	30	N 17° 00'	113.5
70	S 72° 00'	113.5	31	N 17° 00'	113.5
71	S 72° 00'	113.5	32	N 17° 00'	113.5
72	S 72° 00'	113.5	33	N 17° 00'	113.5
73	S 72° 00'	113.5	34	N 17° 00'	113.5
74	S 72° 00'	113.5	35	N 17° 00'	113.5
75	S 72° 00'	113.5	36	N 17° 00'	113.5
76	S 72° 00'	113.5	37	N 17° 00'	113.5
77	S 72° 00'	113.5	38	N 17° 00'	113.5
78	S 72° 00'	113.5	39	N 17° 00'	113.5
79	S 72° 00'	113.5	40	N 17° 00'	113.5
80	S 72° 00'	113.5	41	N 17° 00'	113.5
81	S 72° 00'	113.5	42	N 17° 00'	113.5
82	S 72° 00'	113.5	43	N 17° 00'	113.5
83	S 72° 00'	113.5	44	N 17° 00'	113.5
84	S 72° 00'	113.5	45	N 17° 00'	113.5
85	S 72° 00'	113.5	46	N 17° 00'	113.5
86	S 72° 00'	113.5	47	N 17° 00'	113.5
87	S 72° 00'	113.5	48	N 17° 00'	113.5
88	S 72° 00'	113.5	49	N 17° 00'	113.5
89	S 72° 00'	113.5	50	N 17° 00'	113.5
90	S 72° 00'	113.5	51	N 17° 00'	113.5
91	S 72° 00'	113.5	52	N 17° 00'	113.5
92	S 72° 00'	113.5	53	N 17° 00'	113.5
93	S 72° 00'	113.5	54	N 17° 00'	113.5
94	S 72° 00'	113.5	55	N 17° 00'	113.5
95	S 72° 00'	113.5	56	N 17° 00'	113.5
96	S 72° 00'	113.5	57	N 17° 00'	113.5
97	S 72° 00'	113.5	58	N 17° 00'	113.5
98	S 72° 00'	113.5	59	N 17° 00'	113.5
99	S 72° 00'	113.5	60	N 17° 00'	113.5
100	S 72° 00'	113.5	61	N 17° 00'	113.5
101	S 72° 00'	113.5	62	N 17° 00'	113.5
102	S 72° 00'	113.5	63	N 17° 00'	113.5
103	S 72° 00'	113.5	64	N 17° 00'	113.5
104	S 72° 00'	113.5	65	N 17° 00'	113.5
105	S 72° 00'	113.5	66	N 17° 00'	113.5
106	S 72° 00'	113.5	67	N 17° 00'	113.5
107	S 72° 00'	113.5	68	N 17° 00'	113.5
108	S 72° 00'	113.5	69	N 17° 00'	113.5
109	S 72° 00'	113.5	70	N 17° 00'	113.5
110	S 72° 00'	113.5	71	N 17° 00'	113.5
111	S 72° 00'	113.5	72	N 17° 00'	113.5
112	S 72° 00'	113.5	73	N 17° 00'	113.5
113	S 72° 00'	113.5	74	N 17° 00'	113.5
114	S 72° 00'	113.5	75	N 17° 00'	113.5
115	S 72° 00'	113.5	76	N 17° 00'	113.5
116	S 72° 00'	113.5	77	N 17° 00'	113.5
117	S 72° 00'	113.5	78	N 17° 00'	113.5
118	S 72° 00'	113.5	79	N 17° 00'	113.5
119	S 72° 00'	113.5	80	N 17° 00'	113.5
120	S 72° 00'	113.5	81	N 17° 00'	113.5
121	S 72° 00'	113.5	82	N 17° 00'	113.5
122	S 72° 00'	113.5	83	N 17° 00'	113.5
123	S 72° 00'	113.5	84	N 17° 00'	113.5
124	S 72° 00'	113.5	85	N 17° 00'	113.5
125	S 72° 00'	113.5	86	N 17° 00'	113.5
126	S 72° 00'	113.5	87	N 17° 00'	113.5
127	S 72° 00'	113.5	88	N 17° 00'	113.5
128	S 72° 00'	113.5	89	N 17° 00'	113.5
129	S 72° 00'	113.5	90	N 17° 00'	113.5
130	S 72° 00'	113.5	91	N 17° 00'	113.5
131	S 72° 00'	113.5	92	N 17° 00'	113.5
132	S 72° 00'	113.5	93	N 17° 00'	113.5
133	S 72° 00'	113.5	94	N 17° 00'	113.5
134	S 72° 00'	113.5	95	N 17° 00'	113.5
135	S 72° 00'	113.5	96	N 17° 00'	113.5
136	S 72° 00'	113.5	97	N 17° 00'	113.5
137	S 72° 00'	113.5	98	N 17° 00'	113.5
138	S 72° 00'	113.5	99	N 17° 00'	113.5
139	S 72° 00'	113.5	100	N 17° 00'	113.5
140	S 72° 00'	113.5	101	N 17° 00'	113.5
141	S 72° 00'	113.5	102	N 17° 00'	113.5
142	S 72° 00'	113.5	103	N 17° 00'	113.5
143	S 72° 00'	113.5	104	N 17° 00'	113.5
144	S 72° 00'	113.5	105	N 17° 00'	113.5
145	S 72° 00'	113.5	106	N 17° 00'	113.5
146	S 72° 00'	113.5	107	N 17° 00'	113.5
147	S 72° 00'	113.5	108	N 17° 00'	113.5
148	S 72° 00'	113.5	109	N 17° 00'	113.5
149	S 72° 00'	113.5	110	N 17° 00'	113.5
150	S 72° 00'	113.5	111	N 17° 00'	113.5
151	S 72° 00'	113.5	112	N 17° 00'	113.5
152	S 72° 00'	113.5	113	N 17° 00'	113.5
153	S 72° 00'	113.5	114	N 17° 00'	113.5
154	S 72° 00'	113.5	115	N 17° 00'	113.5
155	S 72° 00'	113.5	116	N 17° 00'	113.5
156	S 72° 00'	113.5	117	N 17° 00'	113.5
157	S 72° 00'	113.5	118	N 17° 00'	113.5
158	S 72° 00'	113.5	119	N 17° 00'	113.5
159	S 72° 00'	113.5	120	N 17° 00'	113.5
160	S 72° 00'	113.5	121	N 17° 00'	113.5
161	S 72° 00'	113.5	122	N 17° 00'	113.5
162	S 72° 00'	113.5	123	N 17° 00'	113.5
163	S 72° 00'	113.5	124	N 17° 00'	113.5
164	S 72° 00'	113.5	125	N 17° 00'	113.5
165	S 72° 00'	113.5	126	N 17° 00'	113.5
166	S 72° 00'	113.5	127	N 17° 00'	113.5
167	S 72° 00'	113.5	128	N 17° 00'	113.5
168	S 72° 00'	113.5	129	N 17° 00'	113.5
169	S 72° 00'	113.5	130	N 17° 00'	113.5
170	S 72° 00'	113.5	131	N 17° 00'	113.5
171	S 72° 00'	113.5	132	N 17° 00'	113.5
172	S 72° 00'	113.5	133	N 17° 00'	113.5
173	S 72° 00'	113.5	134	N 17° 00'	113.5
174	S 72° 00'	113.5	135	N 17° 00'	113.5
175	S 72° 00'	113.5	136	N 17° 00'	113.5
176	S 72° 00'	113.5	137	N 17° 00'	113.5
177	S 72° 00'	113.5	138	N 17° 00'	113.5
178	S 72° 00'	113.5	139	N 17° 00'	113.5
179	S 72° 00'	113.5	140	N 17° 00'	113.5
180	S 72° 00'	113.5	141	N 17° 00'	113.5
181	S 72° 00'	113.5	142	N 17° 00'	113.5
182	S 72° 00'	113.5	143	N 17° 00'	113.5
183	S 72° 00'	113.5	144	N 17° 00'	113.5
184	S 72° 00'	113.5	145	N 17° 00'	113.5
185	S 72° 00'	113.5	146	N 17° 00'	113.5
186	S 72° 00'	113.5	147	N 17° 00'	113.5
187	S 72° 00'	113.5	148	N 17° 00'	113.5
188	S 72° 00'	113.5	149	N 17° 00'	113.5
189	S 72° 00'	113.5	150	N 17° 00'	113.5
190	S 72° 00'	113.5	151	N 17° 00'	113.5
191	S 72° 00'	113.5	152	N 17° 00'	113.5
192	S 72° 00'	113.5	153	N 17° 00'	113.5
193	S 72° 00'	113.5	154	N 17° 00'	113.5
194	S 72° 00'	113.5	155	N 17° 00'	113.5
195	S 72° 00'	113.5	156	N 17° 00'	113.5
196	S 72° 00'	113.5	157	N 17° 00'	113.5
197	S 72° 00'	113.5	158	N 17° 00'	113.5
198	S 72° 00'	113.5	159	N 17° 00'	113.5
199	S 72° 00'	113.5	160	N 17° 00'	113.5
200	S 72° 00'	113.5	161	N 17° 00'	113.5
201	S 72° 00'	113.5	162	N 17° 00'	113.5

STATION	BEARING	DISTANCE	BLOCK CORNERS	
			1	2

GENERAL PLAN
 CONSISTING OF SHEETS 1 - 3
 OF THE TOWNSHIP OF
SASOLBURG EXTENSION 61 (CLUB MILOS)

PROVINCE : FREE STATE
 ADMINISTRATIVE DISTRICT : PHUMS
 SCALE 1 : 750



S.G. No. 778/1999
 SHEET No. 3
 APPROVED
 FOR SURVEYOR-GENERAL
 /2010/03/23

Surveyed in October 2009 - Survey 1009
 By Mr.
[Signature]
 S. J. van der Merwe
 Registered Land Surveyor

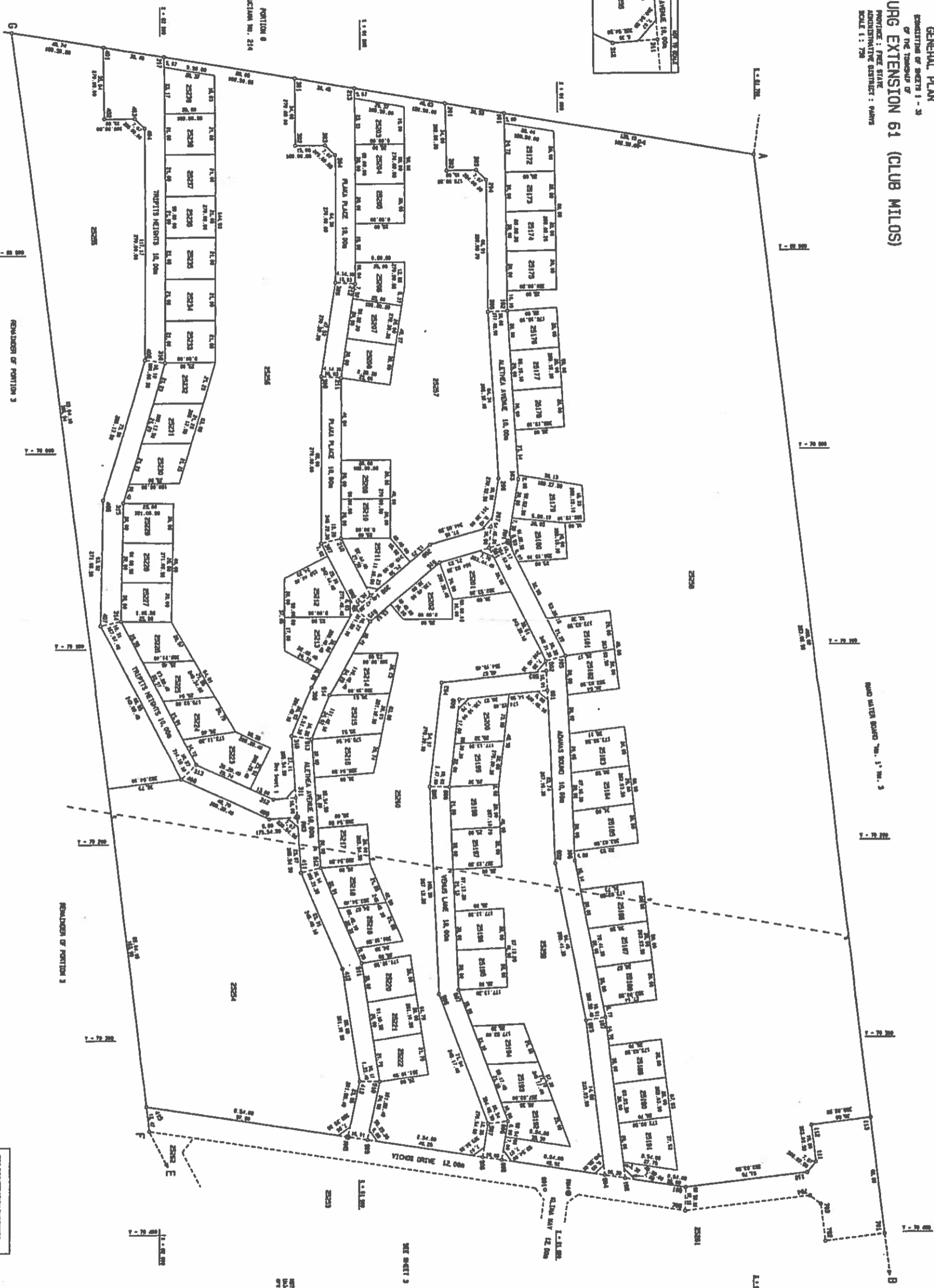
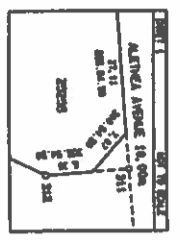
NOTE:
 Unless otherwise indicated all policy distances
 are in meters

FOR ADMINISTRATIVE PURPOSES
 THE SURVEYOR-GENERAL
 HAS APPROVED THIS PLAN
[Signature]
 S. J. van der Merwe
 Registered Land Surveyor
 1999/03/23

FILE No. S/GS 2009/1009
 SURVEY RECORD No. S/GS/1009
 COMPILATION 20-04
 DESS : S. LEBENTHIN
 02/11/2009
 04, 1009-1009-1

GENERAL PLAN
 CONSISTING OF SHEETS 1 - 3
 OF THE TOWNSHIP OF
SASOLBURG EXTENSION 61 (CLUB MILOS)
 PROVINCE : FREE STATE
 ADMINISTRATIVE DISTRICT : PHUMS
 SCALE 1 : 750

S.6. No. 778/1999
 SHEET No. 2
 APPROVED
 FOR SUBMITTAL-GENERAL
 1999-05-27.



FOR INFORMATION PURPOSES
 THE REGISTERED DRAWING
 WAS REPRODUCED FROM
 THE ORIGINAL DRAWING
 ON 1999-07-01
 1999-07-01

FILE No. 67/96 Sasolburg
 SAFETY RECORD No. 009/9999
 COMPILATION 19-94
 DESIGN : ELSPRENTIS
 AS 2/18/1998
 OR 000 02715

NOTE:
 Survey boundaries indicated all other dimensions
 are to be verified.

Prepared by November 1998 - Survey 2000
 by
 P. J. van der Merwe
 P. J. van der Merwe
 PROFESSIONAL LAND SURVEYOR